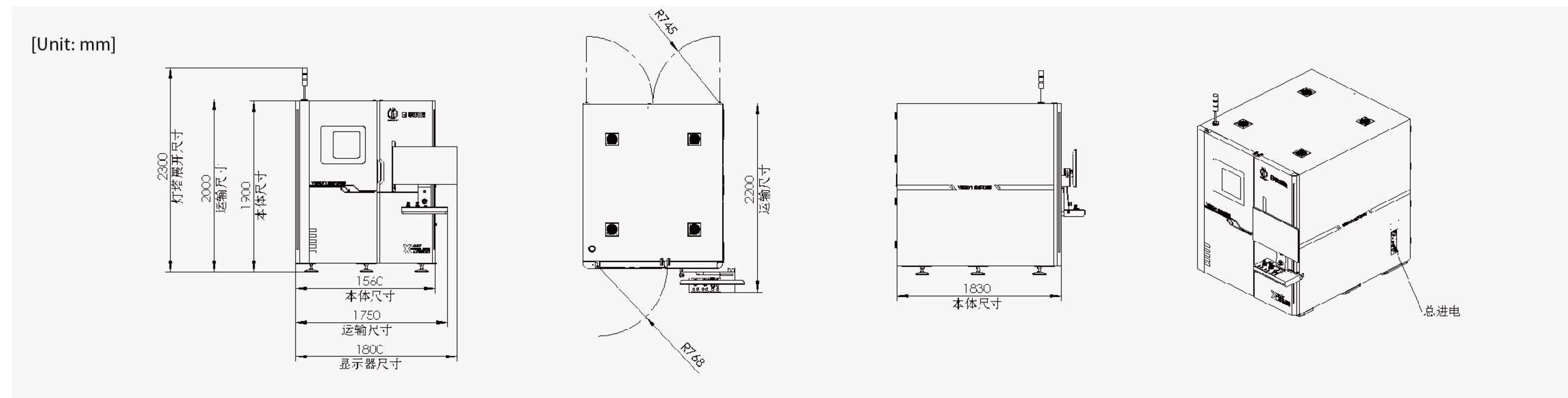


# Technical Specifications |

X camera system	Acquisition Mode	2D, 2.5D, 3D (All in one)
	X-ray Source	Open 160kv max (15w)
	Detector	High-definition flat panel detector
	Image Resolution	≤1μm
	Magnification	2500× (Synthesis7500×)
Stage	Loading Area	580mm(X) X 610mm(Y)
	Maximum Inspection Area (3D)	Planar3D:400mm(X)X400mm(Y);Cone-beam3D:50mm(D)X150mm(L)
	Sample Weight	Planar3D:10kg ; Cone-beam3D:500g (Standard fixture)
Software system	Automatic Navigation Function	Record the position coordinates and parameter information of the feature points to facilitate quick moving to the detection point
	Measurement Function	Bubble measurement, distance, area, etc
Equipment body	Voltage	Single-phase 220AC, 50/60Hz
	Power	4.5kW
	Motion Control Method	Mouse + Dual Joystick + Keyboard
	Dimensions	1560mm(W)X1830mm(D)X1900mm(H) Excluding the display Monitor
	Weight	≈3700Kg
	Control Unit	Control PC
	3D Construction Method	Planar3D+Cone-beam3D
	Radiation Dosage	<0.5μSv/h



UNICOMP TECHNOLOGY CORPORATE:

Web: [www.global-xray.com](http://www.global-xray.com)

## Unicomp Technology (Group) Co., Ltd.

Add: No. 11, Lijiang Road, Xinwu District, Wuxi City, Jiangsu Province, P.R.C.  
Tel: +86-510-68506688

## Chongqing Unicomp Technology Co., Ltd

Add: No.185, Shuangshi Avenue, Bishan District, Chongqing, P.R.C.  
Tel: +86-23-41889868

## Shenzhen Unicomp Technology Co., Ltd

Add: Building 2A, Baoxin Technology Park, Guangyuan 5th Road, Guangming District, Shenzhen, Guangdong Province P.R.C.  
Tel: +86-755-26650316

## RAY TECH (MALAYSIA) SDN.BHD.

Add: No.2, Jalan SILC 4/1, Kawasan Perindustrian SILC, 79200, Iskandar Puteri, Johor, Malaysia.  
Tel: +60 7 5879332

## Europe Unicomp Technology Kft.

Add: B8, 1097 Budapest Gubacsi út 32, Hungary

## Creative Electron International LLC.

Add: 201 Trade St., San Marcos, CA 92078, United States.



# AX9500 VISION SERIES

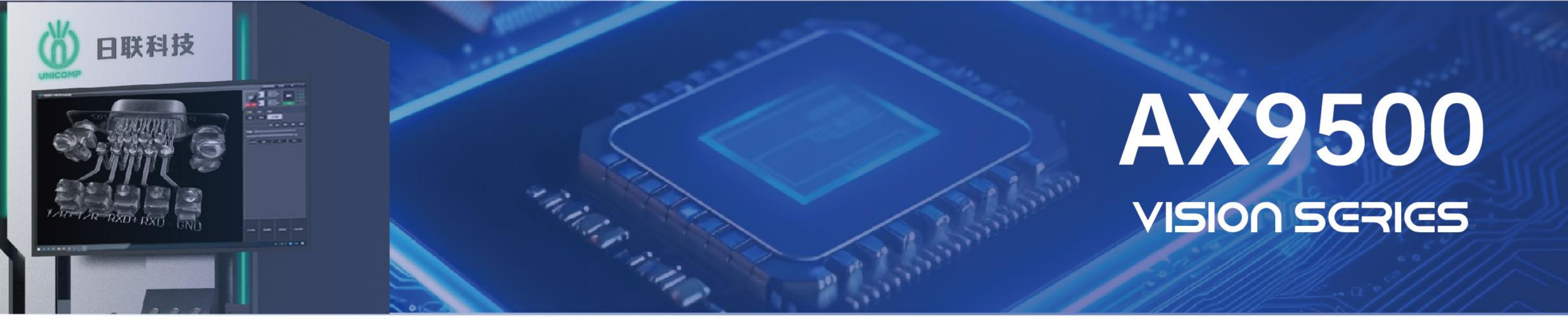
## 3D OFFLINE INSPECTION



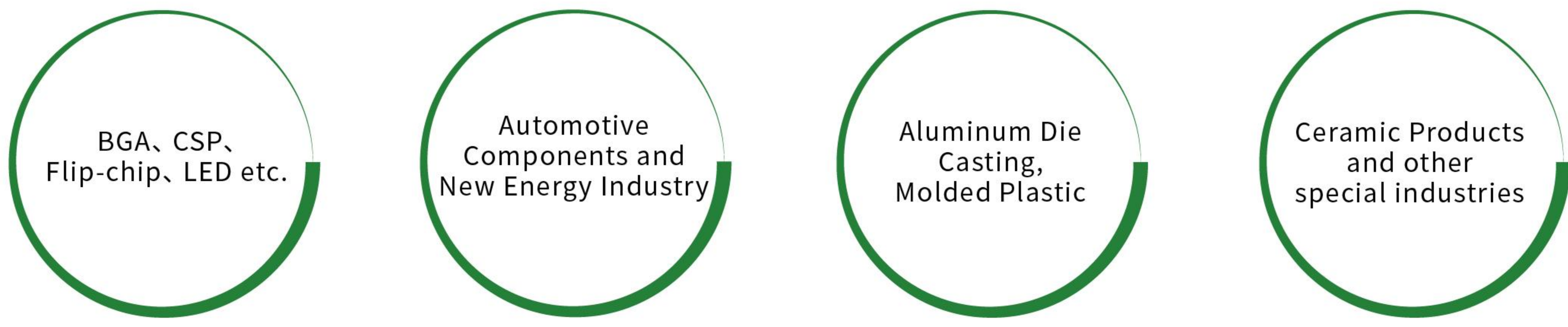
Industrial X-ray CT Inspection Expert

688531.SH





### Application Fields



### Features

- Precise detection of small defects
- Multi-mode 3D reconstruction
- 7 axis linkage, 360° arbitrary Angle detection
- CNC programming positioning detection
- Nano Focus Open Tube
- Multi-angle image tracking system
- High resolution FPD detector
- Active Air cushion vibration isolation platform (optional)

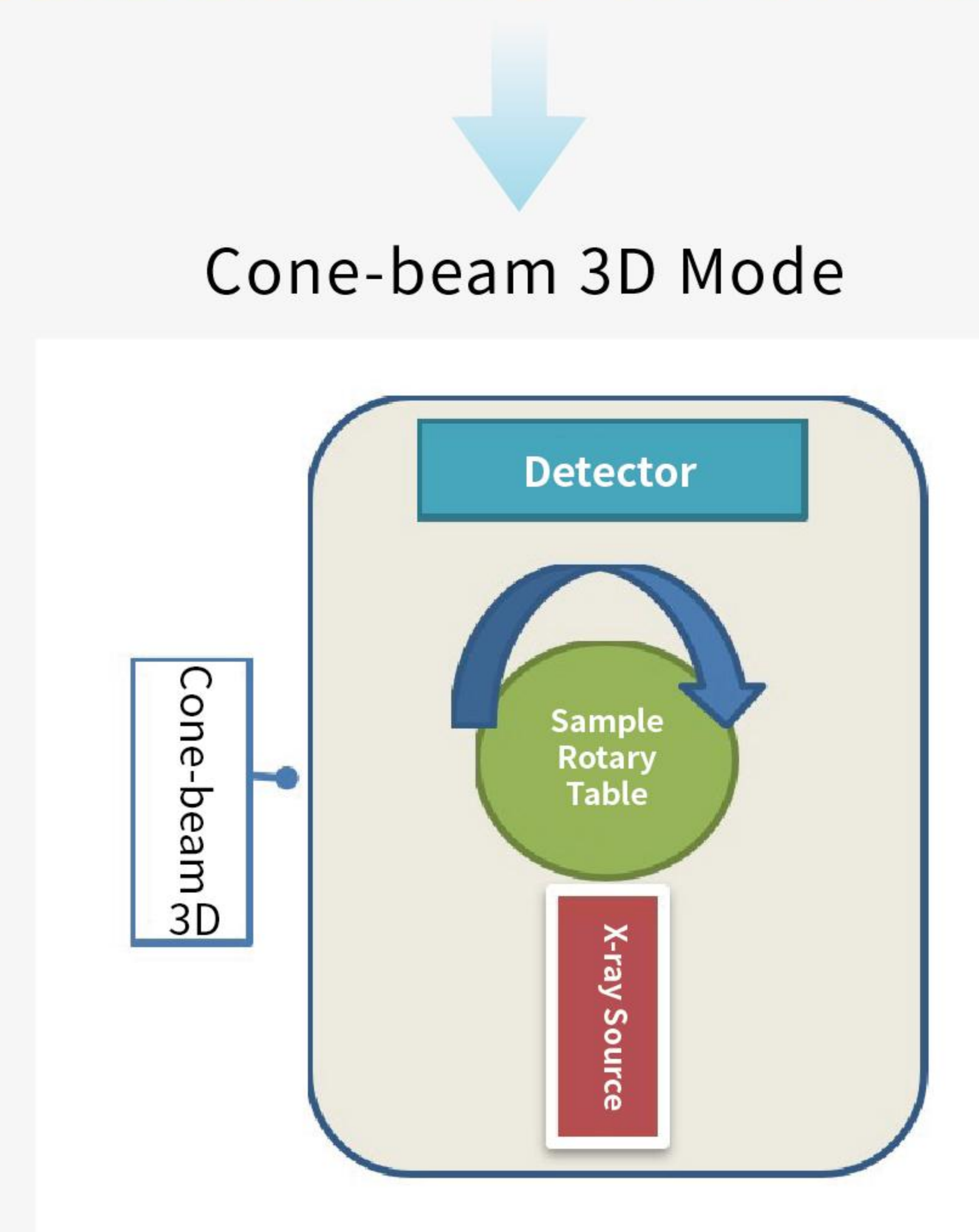
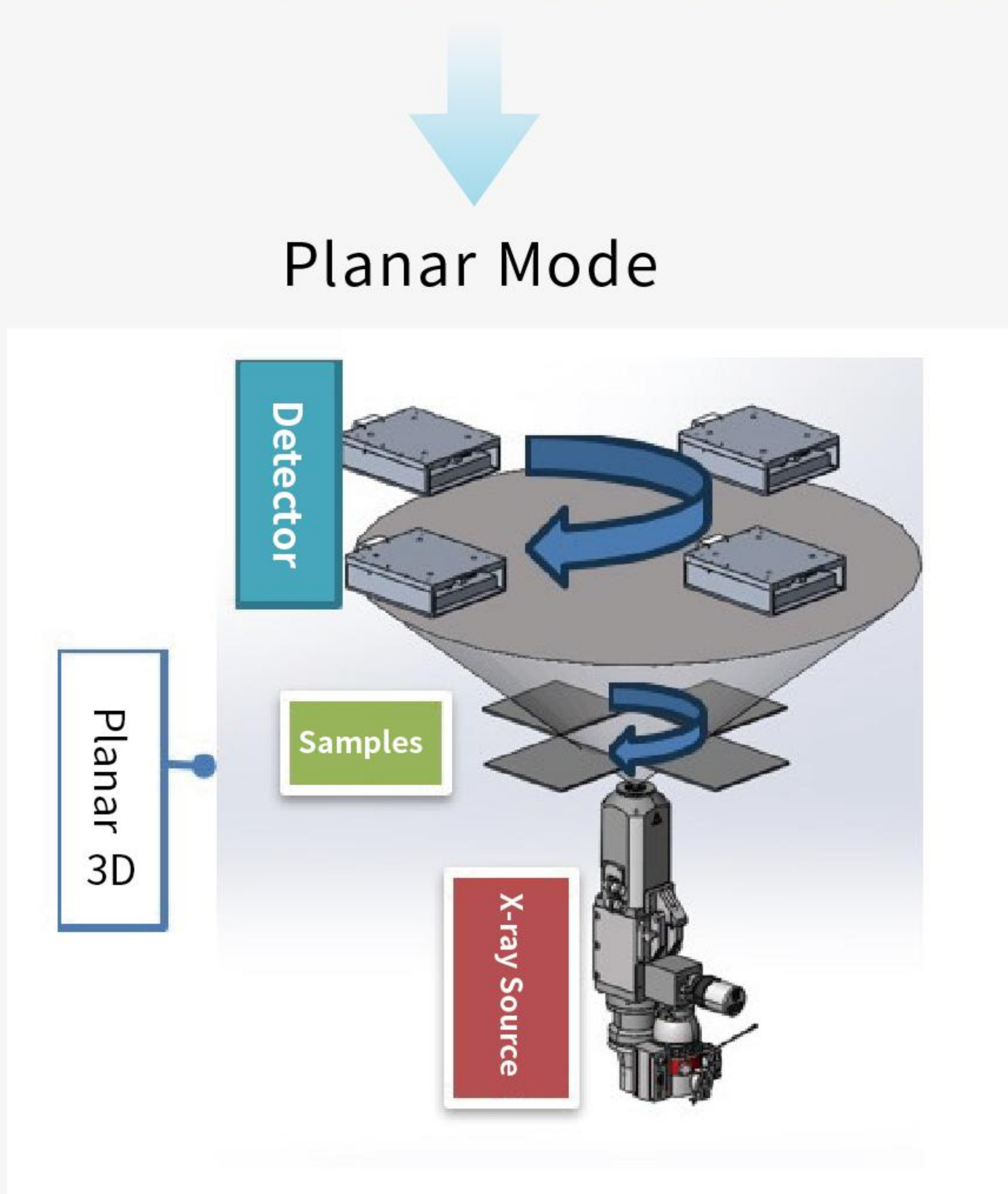
### Reconstruction Principles

#### Planar 3D

By using company's proprietary PCT 3D reconstruction technology, to achieve high-precision, high-speed, multi-resolution 3D reconstruction.

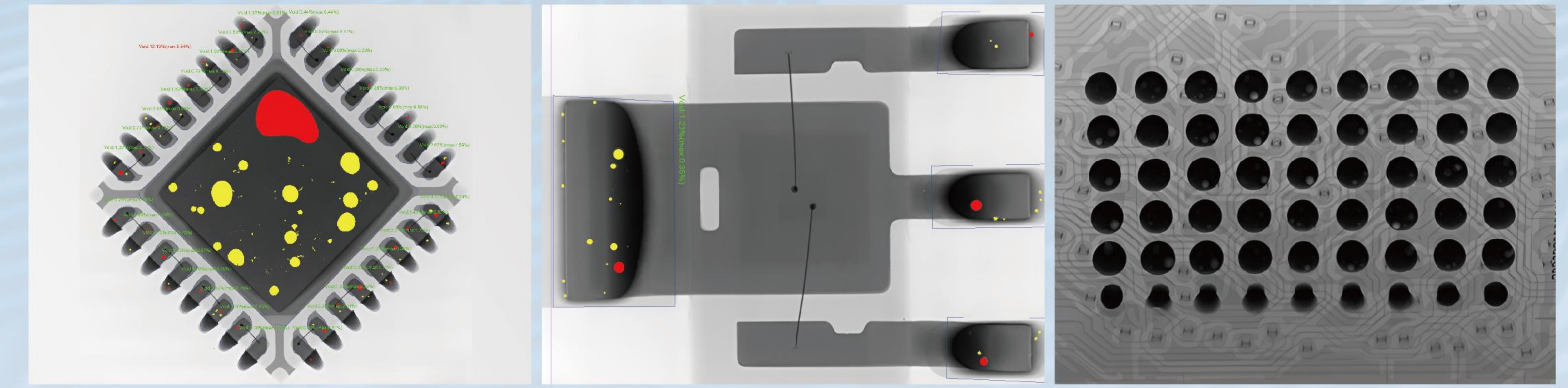
#### Cone-beam 3D

By using company's proprietary "imaging trajectory" calibration technology to obtain high-precision "projection images" required for ACT reconstruction, high-quality volumetric data can be reconstructed.

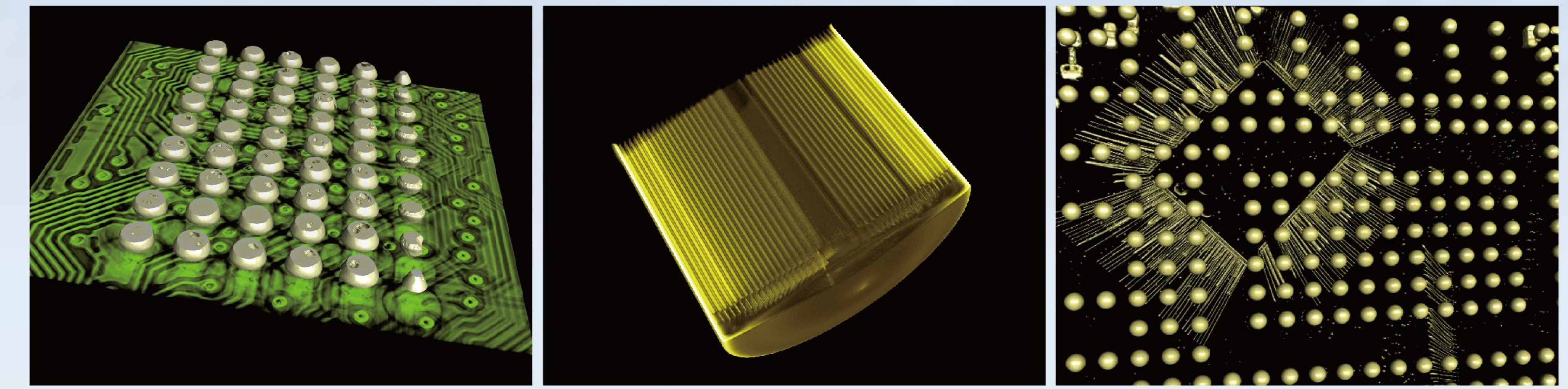


### Application Cases

#### 2D/2.5D

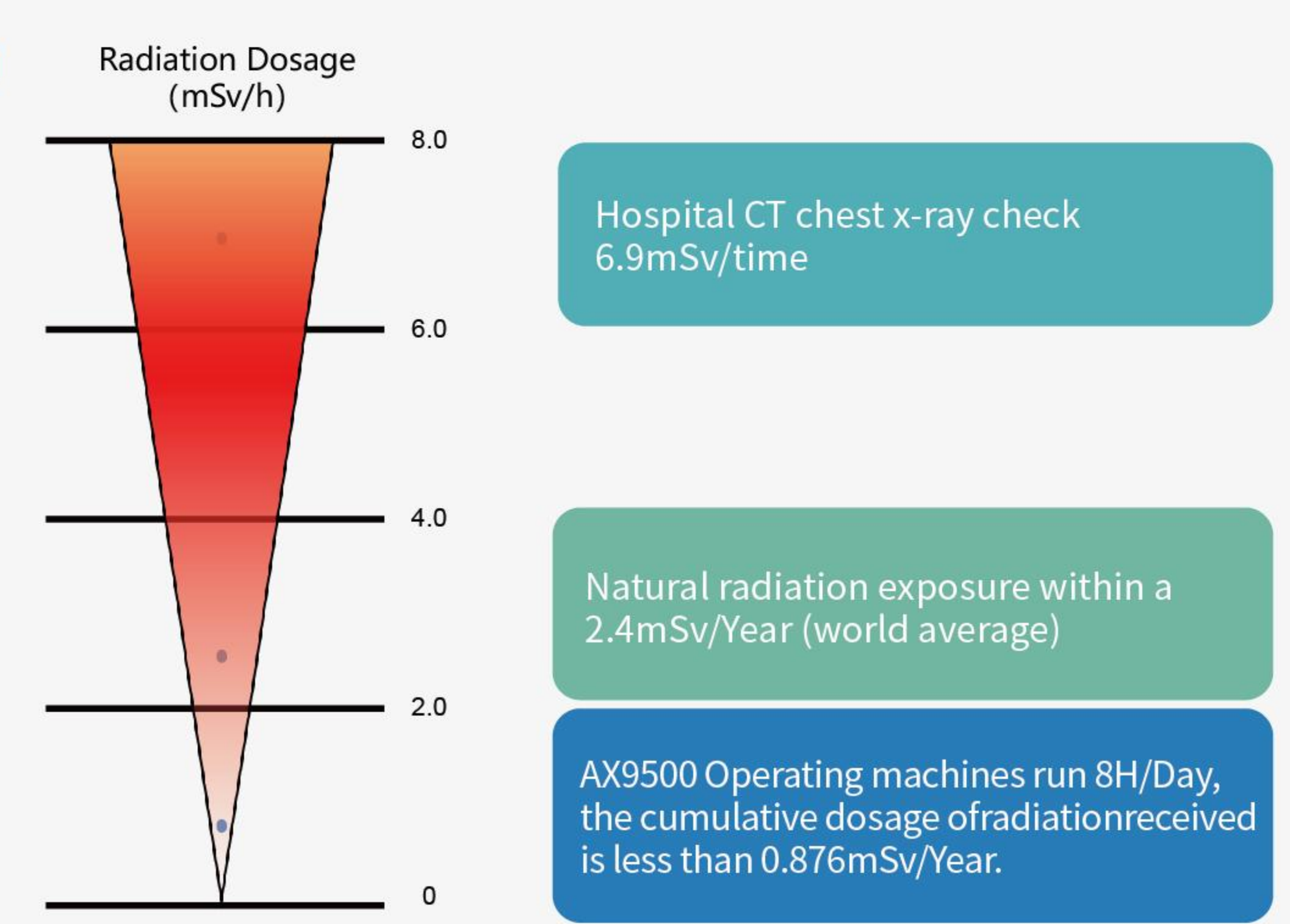


#### 3D



### Dosage Safe settings

#### Radiation dose



**EMERGENCY BUTTON**  
In case of emergency, press the emergency button to quickly cut off the moving parts of the device and the power supply of the radiation source.



**Interlock**  
High-sensitivity limit switch ensures that the power of X-ray source is automatically cut off once the door and window are opened.

- AX9500 machine's ambient radiation dosage is **<0.5μSv/h**
- Meeting the international FDA radiation health protection standards (<1μSv/h)
- AX9500 is calculated based on Unicom's prototype storage environment, including ambient radiation.