



Industrial CT&X-ray
Inspection Solutions Provider

CX7000L

X-Ray SMD Chip Counting System



CX7000L



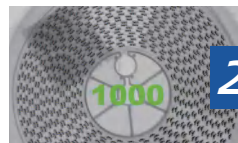
Application Fields

Reels	Accuracy	Others Components	Accuracy
01005	99.99%	Transistors	99.99%
0201	99.99%	Bulks	99.99%
0402	99.99%	ESD Packages	99.9%
0603	99.99%	Tube	100%
0805	99.99%	JEDEC TRAY	100%
1206	99.99%	Other Resistance & Capacity	99.99%

Functions and Features



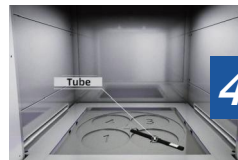
1 Fingerprint Access Management and Real-time Monitoring of Radiation



2 Anti-interference Counting



3 Embedded Sensors for Identifying Reels



4 AI Technology for Counting

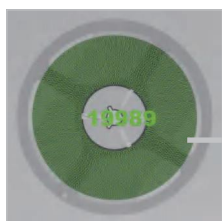


5 Intelligent QR Reading System

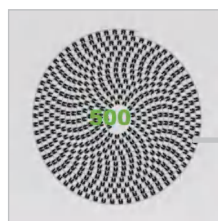


6 Full Anti-pinch Hand System

Inspection Images



01005



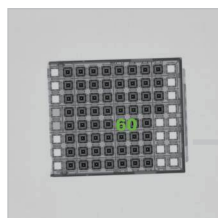
Chips



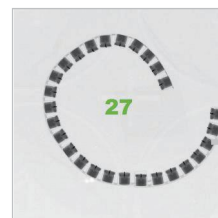
Abnormal Components



ESD / HSC



TRAY



Bulks

Technical Parameters and Specifications

System Summary

Footprint	800(W)×1380(D)×1950(H)mm	Plywood Packing Size	900(W)×1460(D)×2090(H)mm
Machine Weight	674 kg	Packing Weight	746 kg
Power Supply	AC 110/220V, 50/60Hz	Power Consumption	Max. 1.5kW

X-Ray Tube

Voltage	50 kV (80kV Optional)	Current	1000 μA (80kV: 700μA)
Tube Type	Sealed	Focus Spot Size	0.07 mm (80kV: 0.03mm)

Imaging Detector

Detector	Flat Panel Detector (FPD)	Pixel Size	139 μm
Effective Inspection Area	430*430mm	Frame Rates	2 fps
Pixel Matrix	3072*3072 pixel	AD Conversion	16 bits

Inspection Ability

Tape & Reel size	7"-17"
Scan Height	≤ 80mm
Inspection Min. Component	01005
Inspection Accuracy	≥ 99.99%
Inspection Speed	< 10s/Tape & Reel (7"-17") < 10s(7" *4Tape & Reel)

Industrial PC

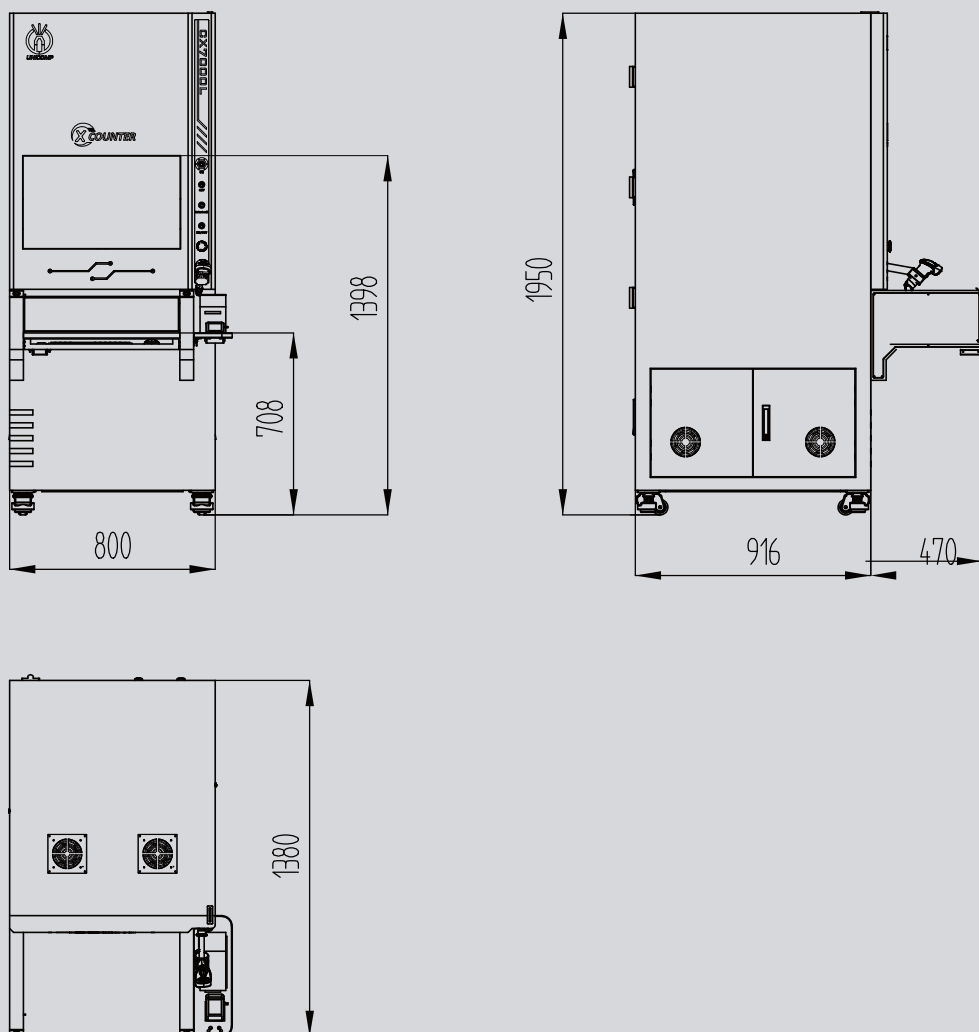
Monitor	27" FHD LCD Display
System OS	Windows 10 64bit
Hard Disk	256G (SSD) + 1T (HDD)
RAM	16 GB
CPU Model	Intel i7 Processor
Support Connection with MES, ERP and WMS Intelligent Storage System.	

Other Features

Door Open	Auto-door, Anti-Pinch	Feeding Method	Manual
Radiation Monitoring	Safety Protection, Real-time Monitoring of Radiation	X-Ray Safety	≤0.5μSv/h (Meets All International Standards)
Accessories	Embedded barcode camera reader, hand-held barcode scanner	Authority Management	Fingerprint Access Management System, and Support Password Accessing.

* Specifications are subject to change without notice, All trademarks are the property of the system maker.

Dimensions and Appearance



UNICOMP TECHNOLOGY CORPORATE:

Wuxi Unicomp Technology Co., Ltd (HQ)

No. 11, Lijiang Road, Xinwu District, Wuxi City, Jiangsu Province, P.R.C.

Zip Code: 214112

TEL: +86-510-68506688 FAX: +86-510-81816018

Shenzhen Unicomp Technology Co., Ltd

Building 2A, Baoxin Technology Park, Guangyuan 5th Road, Guangming District, Shenzhen, Guangdong Province P.R.C. Zip:518107

TEL: +86-755-26650316 FAX: +86-755-26650296

Chongqing Unicomp Technology Co., Ltd

1st Building, No.23 Fushun Blvd, Biquan Street, Bishan District, Chongqing, P.R.C. Zip Code: 402760

TEL: +86-23-63226131 FAX: +86-23-63228366

Europe Unicomp Technology Kft.

1122 Budapest, Maros utca 12, Hungary

RAY TECH (MALAYSIA) SDN.BHD.

No.2. Jalan SILC 4/1, Kawasan Perindustrian SILC, 79200, Iskandar Puteri, Johor, Malaysia.